

**Business & Economic Development Council
City of Tustin Project Updates
Prepared By: City of Tustin Community Development Department
October 11, 2018**

Old Town Updates

- **Vintage (420 W. Sixth Street):** This new 140-unit residential community will feature amenities such as a pool, clubhouse, and a new mini-park. In addition, a new freeway sound wall has been constructed, which will feature a monochrome City of Tustin logo, and a sign featuring Old Town Tustin. The logo and signage are anticipated to be installed this month. Construction of the homes is well underway at the site, and model homes are anticipated to open in December 2018. Please refer to Attachment A for an exhibit displaying the active and completed permits for this project.



Vintage is under construction

- **New Housing (140 S. A Street):** On February 28, 2017, the Planning Commission approved a request by Habitat for Humanity to construct two (2) detached condominium homes to be set aside for veterans and their families. In June 2018, the City of Tustin participated in a "build day" at the site with members of City Staff, City Council, and the community. A ribbon cutting for the new homes is anticipated to be held in the near future.



Habitat for Humanity Homes

Tustin Legacy Updates

- **Levity in Tustin Legacy (Tustin Ranch Road/Victory Road):** In January 2018, the City Council approved the development of a new 218-unit residential community by CalAtlantic Homes, on an approximately 20-acre lot, bounded by Tustin Ranch Road, Victory Road, Moffett Drive, and Park Avenue. This project features three (3) new neighborhoods: Fleet at Levity – townhomes; Velocity at Levity – flats; and, Icon at Levity – single family homes. Precise grading is currently in progress at the site.
- **Jamboree Housing (Tustin Ranch Road/Warner Avenue):** Preliminary plans have been submitted by Jamboree Housing to provide 114 affordable rental housing units within Tustin Legacy in the area between Anton Legacy Apartments and The District at Tustin Legacy (Reference area 17 on the Tustin Legacy Map included as Attachment B). The submitted plans are currently under review by City Staff.
- **The Village at Tustin Legacy (Kensington Park Dr. / Edinger Avenue):** Construction continues to progress on the medical office portion of this new center which includes 248,292 square feet of retail and medical uses. The Health South (acute care) facility is anticipated to commence with grading of their site in the near future.
- **Flight at Tustin Legacy (Barranca Parkway/Red Hill Avenue):** This development proposal includes a variety of uses such as: creative office uses; a food hall; and, conference center including a connection into Tustin Legacy Park. Construction is currently in progress at the site. The core office buildings are anticipated to be complete in the first quarter of 2019, with the food hall opening shortly thereafter.



Flight construction photo from October 9, 2018

- **Veterans Sports Park (Valencia Avenue):** This approximately 30-acre park is designed as a community/sports park and will accommodate large group activities and offer a wide variety of facilities including: Four (4) lighted soccer fields; three (3) lighted ball fields; four (4) lighted tennis courts; two (2) lighted basketball courts; two (2) lighted sand volleyball courts; eight (8) lighted pickleball courts; a skate park; and, a veteran's memorial. The veteran's plaza

and memorial area, designed as a place of honor, will be located at the west side of the park. Grading work is complete at the site, and Phase II of the project (which includes construction of the ball fields and equipment) is currently accepting bids. It is estimated that construction of the park will be complete during Fall 2019.

- **The Yellow Chilli (2463 Park Avenue):** On July 23, 2018, the Zoning Administrator approved a request to establish a Type 47 ABC License in conjunction with outdoor seating at an existing tenant space within The District (former Sharky's location). The new Indian restaurant is anticipated to open before the end of 2018.
- **Cinnaholic (2423 Park Avenue):** A new vegan cinnamon roll shop, which was featured on Shark Tank, will be opening soon in the former Bowlology location within The District Promenade area.
- **Utopia Café (2489 Park Avenue):** This European café serving lunch and dinner will be opening soon in the former Peets Coffee location.
- **Joon Shabu 2 (2453 Park Avenue):** On September 20, 2018, the Zoning Administrator approved a request for alcoholic beverage sales at the new shabu shabu restaurant in The District. Joon Shabu 2 is now open for business.



Cinnaholic will open soon (top) and Joon Shabu 2 is now open (bottom)

For further information on projects within the Tustin Legacy area, please see Attachment A which includes a map and a table providing additional information on projects approved, in progress, and proposed for the area.

Other Updates

- **Red Hill Specific Plan (Red Hill between San Juan & Mitchell):** City Staff continues to move forward with the Red Hill Avenue Specific Plan. On September 25, 2018, the Planning Commission recommended the Plan to move forward to the City Council for their consideration. The City Council will hold a public hearing on this item on October 16, 2018.
- **Schools First Credit Union (15332 Newport Avenue):** Schools First has submitted plans for a new office building. The plans are currently under review by City Staff.
- **Condominium Development (1381-1391 San Juan Street):** This development involves the construction of five (5) single family detached condominiums. Construction of the homes continues to progress, and is anticipated to be complete during 2018.
- **Rock & Brews (1222 Irvine Boulevard):** On August 14, 2018, the Planning Commission approved a request to expand the former Lone Star Steakhouse converting it into a Rock & Brews Restaurant. Demo work is currently underway at the site.



Demo is in progress for Rock & Brews

- **New Transitional Housing for Families:** The City of Tustin has entered into an Exclusive Agreement to Negotiate with Family Promise of Orange County to construct a new transitional housing development which will provide housing for seven (7) to nine (9) homeless families at this site.

Attachments:

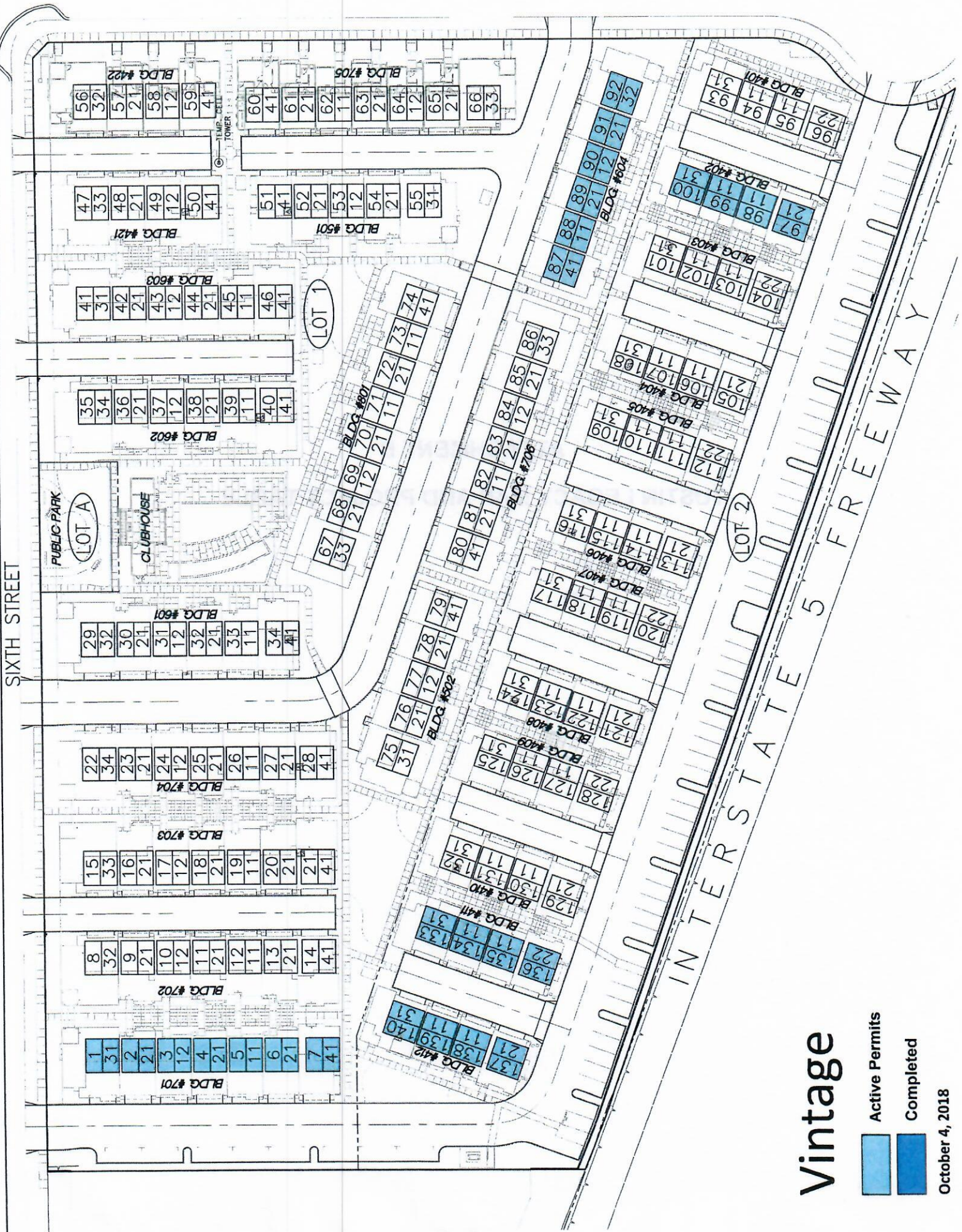
- A. Vintage Active and Complete Permits Exhibit
- B. Tustin Legacy Map and Project Table

ATTACHMENT A

VINTAGE ACTIVE AND COMPLETE PERMITS EXHIBIT

SIXTH STREET

B' STREET



Vintage

Active Permits

Completed

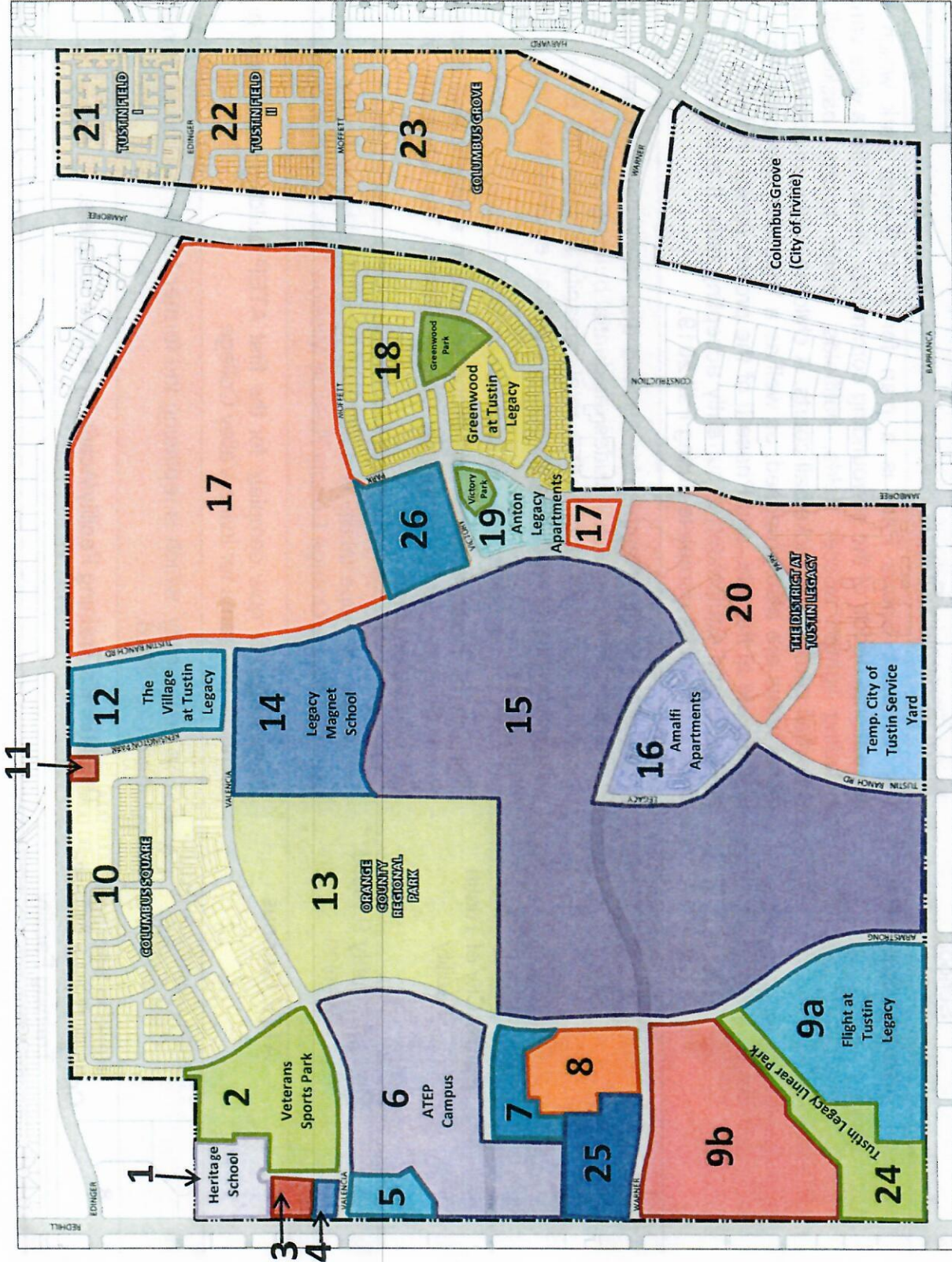
October 4, 2018

ATTACHMENT B

TUSTIN LEGACY MAP AND PROJECT TABLE

LEGEND

1. Heritage Elementary School
2. Veterans Sports Park
3. OC Social Services
4. Future City of Tustin Facility
5. OC Rescue Mission
6. ATEP Campus (SOCCCD)
7. OC Animal Care Facility
8. Rancho Santiago College District Sheriff's Training Facility
- 9a. Flight – Business / Office/R&D, approx. 860,000sf
- 9b. Cornerstone 2 Business/Office/R&D
10. Columbus Square – 1,075 Residential Units
11. Fire Station # 37
12. The Village at Tustin Legacy – Shopping Center
13. OC Regional Park
14. Legacy Magnet School
15. Neighborhood D Community Core –Mixed-use Urban Village
16. Amalfi Apartments – 533 Residential Units
17. Jamboree Housing – 114 Affordable Residential Units
18. Greenwood – 375 Residential Units & Greenwood Park
19. Anton Legacy Apartments – 225 Affordable Residential Units & Victory Park
20. The District – Shopping Center
21. Tustin Field I – 376 Residential Units
22. Tustin Field II – 189 Residential Units
23. Columbus Grove – 465 Residential Units
24. Tustin Legacy Linear Park
25. Army Reserve Center
26. Levity in Tustin Legacy – 218 Residential Units



BUILT AND ENTITLED PROJECTS

TUSTIN | CA

TUSTIN LEGACY PROJECTS – UPDATED 9-12-18

Map Number	Project	Description and Status
1	Heritage Elementary School	Heritage School is now open as a STEAM (Science, Technology, Engineering, Arts, Math) Elementary School.
2	Veterans Sports Park	The Veterans Sports Park is a plan for a 31.5-acre park which will serve the recreational needs of the surrounding community. It will offer a wide variety of facilities including lighted soccer fields, ballfields, tennis courts, basketball courts, sand volleyball courts, and pickleball courts. A children's play environment, splash pad, and picnic areas are also proposed, as well as a Veterans Memorial Plaza. Grading work is complete at the site, and Phase II of the project (which includes construction of the ball fields and equipment) is currently accepting bids. It is estimated that construction of the park will be complete during Fall 2019.
3	OC Social Services	The Tustin Family Campus for Abused and Neglected Children involves a multi-treatment campus which includes residential buildings and stand-alone homes, and a campus service center with a total capacity to serve 90 beds for abused and neglected children and their parents as well as emancipated youth. This project is complete.
4	Future City of Tustin Facility	The City of Tustin acquired this property through a recent land exchange with the South Orange County Community College District. The future use of this building is yet to be determined.
5	Orange County Rescue Mission	The Village of Hope facility is a 387-bed transitional home for the homeless which is operated by the Orange County Rescue Mission. This project is complete.
6	ATEP Campus	Construction is now complete for the first ATEP building which now houses career technical programs for Irvine Valley College.
7	Orange County Animal Care Facility	This new facility, which is replacing the former facility in Orange, is now open as of March 25, 2018.
8	Rancho Santiago College District Sheriff's Training Facility	This Sheriff's Training Facility/Academy is now complete.

9a	Flight at Tustin Legacy (Formerly Cornerstone 1)	This development proposal includes a variety of uses such as: creative office uses; a food hall; and, conference center including a connection into Tustin Legacy Park. Construction of Flight is now underway, with an anticipated completion date of late 2018.
9b	Cornerstone 2	Phase two of the Cornerstone development will consist of a variety of uses including research and development, office, and specialized employment uses.
10	Columbus Square	1,075 residential units are now complete within this neighborhood.
11	Fire Station #37	Orange County Fire Authority Station #37 moved from its old location off of Red Hill Avenue to this new location at Edinger/Kensington Park Dr. The Fire Station is now open.
12	The Village at Tustin Legacy	Construction continues to progress on the medical office portion of this new center which includes 248,292 square feet of retail and medical uses. The Health South (acute care) facility will commence grading soon. Many of the retail businesses are now open within the shopping center.
13	Orange County Regional Park	The County of Orange has future plans for an 84.5-acre regional park to be located surrounding the North Hangar. A concept plan has been approved by the OC Board of Supervisors. Please visit ocparks.com for further details on this proposed project.
14	Legacy Magnet School	The Tustin Unified School District (TUSD) is currently working on the design of a new magnet school called Legacy Academy, which will be a TIDE school focusing on Technology, Innovation, Design, and Entrepreneurship. Grading of the site is now complete, the facility is substantially designed, and TUSD anticipates plan submittal to the Division of State Architect in the Fall of 2017. TUSD has stated the project would be out to bid next year with bid openings in Spring 2018, and construction to follow, with completion in 2020.
15	Mixed-Use Urban Village (Neighborhood D Community Core)	A mixed-use urban village concept within the community core of Tustin Legacy is proposed. Next steps will include the preparation of a concept plan and business plan as the basis for development of the urban village.
16	Amalfi Apartments	The Irvine Company has constructed a new apartment community consisting of 533 units adjacent to The District at Tustin Legacy.

17	Jamboree Housing	Preliminary plans have been submitted by Jamboree Housing to provide 114 affordable rental housing units within Tustin Legacy in the area between Anton Legacy Apartments and The District at Tustin Legacy. The submitted plans are currently under review by City Staff.
18	Greenwood in Tustin Legacy & Greenwood Park	A total of 375 detached homes have been built by CalAtlantic Homes. Construction of the homes is now complete.
19	Anton Legacy Apartments & Victory Park	St. Anton Partners has completed construction of their 225 unit affordable apartments, and Victory Park is now open.
20	The District at Tustin Legacy	This Class-A Retail Development project has been completed. The District at Tustin Legacy offers a variety of retail services, restaurants, and entertainment venues.
21	Tustin Field I	376 residential units are now complete.
22	Tustin Field II	189 residential units are now complete.
23	Columbus Grove	465 residential units are now complete.
24	Tustin Legacy Linear Park	The City of Tustin is proposing to construct and maintain a 26-acre park and stormwater detention basin. Construction of Phase I of the park (detention basin) is complete, with Phase II of the park (landscaping through Armstrong Avenue, parking lot, restroom facilities) is anticipated to commence along with completion of the Flight project.
25	Army Reserve Relocation	The U.S. Army has relocated from their current Army Reserve Center located on Barranca Parkway adjacent to The District shopping center, to a new location at the north east corner of Red Hill Avenue and Warner Avenue.
26	Levity in Tustin Legacy	In January 2018, the City Council approved the development of a new 218-unit residential community by CalAtlantic Homes, on an approximately 20-acre lot, bounded by Tustin Ranch Road, Victory Road, Moffett Drive, and Park Avenue. This project features three new neighborhoods: Fleet at Levity – townhomes; Velocity at Levity – flats; and, Icon at Levity – single family homes. Precise grading is currently in progress at the site.

MEMO

DATE: October 11, 2018
TO: BEDC Committee
FROM: The District Management & Marketing Team
RE: The District Updates

Dear BEDC Committee:

Enclosed please find recent and projected New Store Openings, District Happenings and Marketing Updates at The District.

Promenade:

1. Cinnaholic (1,157 SF) – Under construction with a projected mid-November opening date.
2. Utopia Caffé (1,700 SF) – Vibrant restaurant/café serving European breakfast and lunch cuisine including desserts and beverages. Tenant is under construction with a projected December opening date.
3. The Yellow Chilli (3,000 SF) – The acclaimed Indian restaurant chain from celebrated Master Chef Sanjeev Kapoor, is set to open at The District at Tustin Legacy later this year. Sanjeev Kapoor is India's answer to Wolfgang Puck and we're beyond excited to bring such a renowned concept to The District.
4. Bubble Pop (4,500 SF) – A family fun concept providing an interactive bubble experience for kids and adults opened next door to Fashion Camp in The Promenade.

October Activities:

**OC WALK TO REMEMBER & EXPO
w/ Forever Footprints**

Saturday, October 13th, 2018
Parking lot next to PetSmart

Support for a good cause. The OC Walk to Remember honors families who have experienced pregnancy loss and infant death. Parents, and their loved ones and friends, are invited to walk in their steps.

ocwalkto
REMEMBER
a forever footprints event

THE DISTRICT

AT TUSTIN LEGACY

COOKING CLASS & DINNER

Monday, October 15th, 6pm
Prego Mediterranean

Learn from the BEST! Enjoy a 4-course dinner & glass of wine while learning to cook with Executive Chef, Ugo Allesina. \$45/person, reservations are limited and can be made at info@pregoristorante.com.



DISTRICT CREEPY CRAWL w/ Boys and Girls Clubs of Tustin

Saturday, October 27th, 2-5pm
Check-In at The Union Market Courtyard

Enjoy Halloween celebrations & libations! Stroll between more than 30 eateries and shops to enjoy Halloween-themed culinary tastes, desserts, and pours of assorted beer, wine & cocktails. Also enjoy spooky fun entertainment, games & interactive store activations.

In the traditional 'CRAWL' format, guests will receive a passport to eat and drink their way through the center. Pre-Sale tickets \$30, benefiting The Boys and Girls Clubs of Tustin. Kids 10 and under are free. Get your tickets now before they're gone, at TheDistrictTL.com.



HALLOWEEN SPOOKFEST

Wednesday, October 31st, 5-7pm
Throughout the Promenade

Trick-or-treating & more! Create a memorable Halloween experience for your family and friends.

Dress your kids up and bring them to enjoy FREE kids activities, DJ dance parties, balloon artists, costumed characters, and trick-or-treating throughout The Promenade.



THE DISTRICT

AT TUSTIN LEGACY

UBER/LYFT LOUNGE

At District Valet, next to JT Schmid's

Relax and wait for your ride! Guests are encouraged to order their ride from the Lounge or use the address 2411 Park Ave.

The lounge offers soft seating in a shaded area, perfect for these warm fall days!



#MYDISTRICT - INSIDER'S GUIDE

On DistrictTL.com

What is The Yellow Chilli? When is Cinnaholic or Utopia Caffe opening? Check out #MYDISTRICT for all the answers.

Bookmark TheDistrictTL.com/posts on your smartphone and check us out regularly for an insider's guide to *all things* happening at The District.



11th Annual Old Town Tustin

ART WALK

Sidewalk Artists
Handcraft Spaces

Live Music

Kid's Art

'Smile, Tustin' Photo Display

Wine and Beer Tasting
Historic Old Town Bus Tours
Plein Air Contest, October 13-19

OCTOBER 20, 2018
SATURDAY 11:00-5:00PM

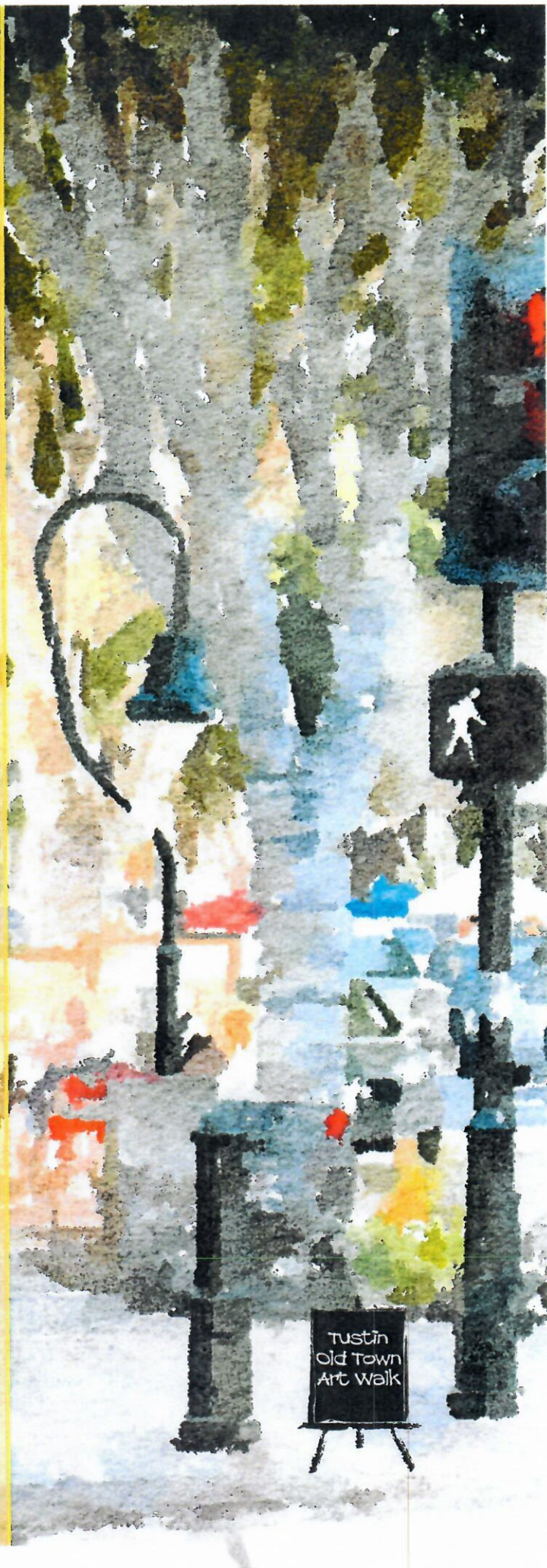
**Main Street &
El Camino Real**



**Parks
Make
Life
Better!**

Gilbreath Family Enterprises

www.tustinca.org/artwalk
(714) 573-3326



The City of Tustin Parks and Recreation Department Presents

H A L L O W E E N **H O W L**

Columbus Tustin Activity Center
17522 Beneta Way, Tustin, CA 92780

Wednesday, October 31, 2018

3:00pm - 5:00pm

Free Event Includes:

- Family Fun
- Costume Contest
- Live Show
- Candy & Prizes
- Carnival Games
- Inflatables

Thank you to our sponsors:



For more information, please call the Tustin Parks and Recreation Department at
(714) 573-3328 or visit www.tustinca.org

THE MARKET PLACE

THE
MARKET
PLACE
TUSTIN

OCTOBER 2018

NOW OPEN

The Good Feet Store
America's Arch Support Experts

is located next to Market Place Dentistry featuring the sale of arch supports, shoes & foot-related products.

SEPHORA

is located at our new building across from White House Black Market. Sephora is a giant in the retail cosmetics field. See attached press release for more details.



is located next to Starbucks Phase I. Koja Kitchen is a fast-casual restaurant serving Korean-Japanese fusion cuisine. See attached press release for more details.



located next to Luna Grill. JA Jiaozi is a Chinese restaurant offering Beijing and dumpling cuisine and alcoholic beverages. See attached OC Register article.



is a Coffee House featuring Vietnamese and ethnic coffee and tea, as well as pastries, bagels, donuts and cotton candy. BLK Coffee is located in the Edwards Theater courtyard. See attached press article.



Alan's Candle Workshop is located next to The White House/Black Market. They offer wax candles in various shapes & sizes including animal-shaped candles.



has performed a full store remodel with a new private patio. Rubio's is located next to Starbucks in Phase I.



is a Halloween costume and accessory store that opened in the former Babies R Us location.



offers delicious Japanese ramen noodle bowls and exciting appetizers. They are located in the Lowe's food court

COMING SOON



located next to Barnes & Noble is expected to open in October and will offer a children's indoor playground and cafe for parties. See attached press article for more details.



located next to ULTA, will offer bedding products, such as mattresses, and is expected to open in October.



located next to Nordstrom Rack, is a high-end Italian furniture store featuring furniture and decor from Natuzzi Editions Retail Collection. They are expected to open in October.

Center Hours

10 am - 9 pm Monday-Friday
10 am - 7 pm Saturday
11 am - 6 pm Sunday

Contacts

The Management Office
8 am - 5 pm Monday-Friday
2961 El Camino Real
Tustin, CA 92782
(714) 730-4124
www.shophethemarketplace.com

24 Hour Security
(714) 288-2274

Security Director
Alex Garcia
agarcia2@irvinecompany.com

Guest Services
Barbara Conti
bconti@irvinecompany.com

Operations
Jerry Harr
jharr@irvinecompany.com

Rent & Sales
Jennifer Avery
javery@irvinecompany.com

Marketing Director
Lindsay Hermance
lhermance@irvinecompany.com

Marketing Coordinator
Jazmine Estrada
jazestrada@irvinecompany.com

PROJECT REPORT

Phase II:

Fountain Remodel Project - Includes new tile, concrete seat wall and added lighting has been completed.

Landscape Pot Upgrade - All trees in sidewalk pots along the storefronts have been repainted and replaced with new plant material in all Phases. Additional landscape upgrades at Phase 3 through October 19.

MANAGEMENT OFFICE

We are pleased to announce our **new Marketing Director, Lindsay Hermance**. Lindsay was the Marketing Manager at our Irvine Spectrum Center and was promoted as the Marketing Director at The Market Place. Please join us in welcoming Lindsay to TMP!

TENANT EVENTS

Rubio's Coastal Grill hosted a wonderful "Party on the Patio" to celebrate their beautiful new outdoor patio. Event included live music, Free chips and guacamole and beer sampling. Rubio's recently changed it's trade name to "Rubio's Coastal Grill" to mark the latest chapter in their story that brought them from Baja California to the coastal flavors they serve today.



J San Ramen offers Japanese style ramen dishes and specializes on a 14 hour boiled broth. Located in Lowe's food court and now open!



OCTOBER TENANT PROMOTIONS

Join JA Jiaozi during their Extravaganza!

Sept. 12, 2018 – Oct. 31, 2018 • 13776 Jamboree Road, Irvine • (714)786-8999

Visit JA Jiaozi Authentic Dumpling during their JA's Jiaozi Extravaganza - ANY Jiaozi order and get a second order for half the price!

For more information please call (714)786-8999 or visit www.jajiaozi.com.

Taco Rosa's \$10 Lunch Specials

13792 Jamboree Rd, Irvine • 11am-2pm • (714) 505-6080

Enjoy \$10 lunch specials every Monday - Friday from 11am - 2pm at Taco Rosa Mexico City Cuisine at The Market Place.

Menu specials include Tacos de Filete, Enchiladas Mexico City, Fajitas de Pollo and more made with natural ingredients, spices and flavors that fuse contemporary techniques with classic favorites. Taco Rosa was voted Best Mexican Food by *LA Times OC Readers* and was featured on the CBS News segment Best Deals by Tony Tantillo. Their talented chefs strive to bring you the best award-winning dishes and beverages from a variety of regions throughout Mexico.

TAPS IRVINE: BURGER ANNIVERSARY CELEBRATION

Every Friday in October, 2018 • 13390 Jamboree Road, Irvine • (714) 619-0404

WHAT: TAPS Fish House & Brewery in Irvine is celebrating its third anniversary by serving TAPS Signature Burger for \$2.15 (signifying "2015," the year of opening) on Friday, October 5, 12, 19 and 26 with purchase of any beverage. To celebrate the recent opening of TAPS Brewery & Barrel Room in Tustin, the restaurant will offer an award-winning TAPS beer for \$4 to guests ordering the burger. The anniversary special, regularly priced at \$14.99, will be served in the bar/lounge and dining room. It will be available from 11 a.m. to 3 p.m. or until the restaurant serves 300 burgers. WHEN: Fridays, October 5, 12, 19 and 26 starting at 11 a.m. until 300 burgers are sold. WHERE: TAPS Fish House & Brewery, Irvine - The Market Place, 13390 Jamboree Rd, Irvine - Phone: (714) 619-0404 (www.tapsfishhouse.com) MORE: TAPS Burger is a hefty eight ounce custom blend of aged choice Angus chuck, short rib and brisket; layered with sharp cheddar cheese, red onion, tomato, pickle, remoulade and butter lettuce. It's served on a toasted brioche bun with TAPS garlic parsley fries.

Sephora Friends & Family Private Event

October 6 & 13, 2018 • 2999 El Camino Real, Tustin • (714) 669-7746

Sephora at The Market Place will be hosting 2 PRIVATE Friends and Family events on 10/6 from 9am-11am and 10/13 from 7pm-9pm. The discount applies to The Market Place employees only. Please email Sephora directly

at Sephora.TustinMarketPlace@Sephora.com with the email addresses of those who want to attend either event. To attend the 10/6 event, please email by Wednesday, 10/3. For the 10/13 event, please send email by Wednesday, 10/10. For any other questions, please contact the store directly at Sephora.TustinMarketPlace@sephora.com, or at (714) 669-7746.

Free Gift with Service at Merle Norman Cosmetics & Spa

2917 El Camino Real, Tustin • (714) 832-8636

This Gift with Service promotion contains essential treats and a convenient reusable headband for anyone wanting GLOWING SKIN! FREE with a min purchase of \$50 or just a \$40 flat fee. Choose TWO of the following services for FREE! Brow Shaping, Instructional Makeover, Paraffin Hand Treatment, Express Facial. Don't wait, while supplies last. Call for your appointment, or walk-ins are welcome

Meet Kareem Abdul-Jabbar

13712 Jamboree Road, Irvine • (714) 508-9707

Meet Kareem Abdul-Jabbar and discuss his newest book! Please join us on October 11th at 7pm at Barnes & Noble at The Market Place where Kareem Abdul-Jabbar will be hosting a book signing and discussion event.

Please visit www.shophthemarketplace.com for more event listings & coupon offers.

MARKETING PROGRAMS

Disneyland, Universal Studios tickets, and TMP Gift Cards are available at The Market Place Management Office 8:00 am-5:00 pm Mon-Fri.

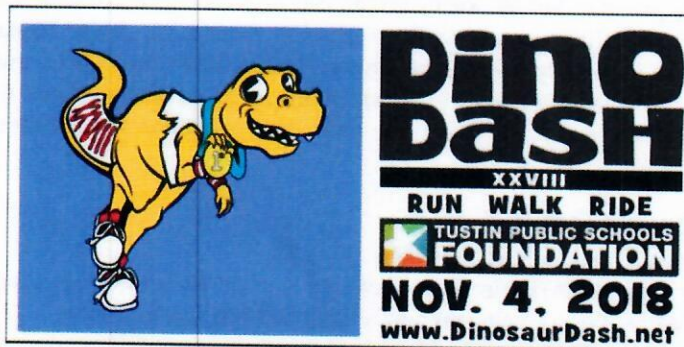
28th Annual Dinosaur Dash

You're invited to become an Exhibitor or Food Sponsor at the 28th Annual **Dinosaur Dash on Sunday, November 4**. And the Tustin Public Schools Foundation is extending a special offer just to tenants of The Market Place!

What's the Dinosaur Dash?

It's a community run/walk/bike event and fundraiser in support of Tustin Unified schools and held at The Market Place. Its 2k, 5k, and 10k runs and scenic bike tours draw about 7,000 participants plus thousands more spectators to the event Expo. This year, something special has been added: the inaugural Dino Dash Half-Marathon! We're expecting this exciting addition to draw many fresh new faces to the venue.

Feel free to contact the Tustin Public School Foundation directly or contact The Market Place Marketing Coordinator, Jazmine Estrada at jazestrada@irvinecompany.com if you have any questions.



American Express gift cards available for purchase online and at the Management Office.

An advertisement for American Express gift cards. The top half shows a woman with long brown hair, wearing a black jacket over a striped shirt, holding a gift card that features a tropical beach scene with palm trees. The text 'GIVE HAPPY' is prominently displayed in large, bold, black letters. Below this, in smaller text, is 'FASHION ISLAND THE MARKET PLACE TUSTIN'. The bottom half of the ad is black with the text 'GIVE GIFT CARDS' in large, bold, white letters. Below that, it says 'Available for purchase online and at the Management Office.' and has a 'Buy Now' button. At the very bottom, there is a logo for '30 YEARS THE MARKET PLACE' and a small American Express logo.

THE MARKET PLACE

Retail Therapy App

Download the NEW Retail Therapy app from your mobile app store for instant access to **hundreds of discounts and incredible deals**. Enjoy offers from restaurants, retailers, spas, salons, and more throughout Orange County and Santa Clara County, California.



Need an Item Delivered to Your Home or Office?

Need an item delivered to your home or office? Schedule a delivery with OC Delivery Express, powered by BringPro.

OC Delivery Express is a premium delivery service offering same-day and scheduled delivery from The Market Place. With this exclusive service, BringPro professionals will pick up your items from The Market Place and deliver your purchases to any location in Orange County. Think of it as your own personal assistant.

For items 50 lbs. or less, delivery costs \$12 per delivery for same-day services. Deliveries must be scheduled by 2pm and will occur between 4pm-7pm.

For items 50 lbs. or more, OC Delivery Express offers delivery services starting at \$89 for items up to 2,000 lbs. Visit OCDeliveryExpress.com to book your appointment today!

OC DELIVERY*express*
Exclusively for The Market Place

Need an item delivered to your home or office?

**SAME DAY
DELIVERY
DIRECT TO
YOUR DOOR**

STARTING AT
\$12

**ANY DAY
DELIVERY**

**\$12 FOR *under* 50 LBS.
\$79 FOR *over* 50 LBS.**

WHITE GLOVE SERVICE FOR ALL SIZES (\$29)
Remove items from packaging and light assembly

Go to OCDeliveryExpress.com to book your appointment today!

POWERED BY bringpro
Questions? help@bringpro.com

*Items that are under 50 lbs. but greater than 50" in any dimension must select the over 50 lbs. option.

THE MARKET PLACE

MEMORANDUM

To: The Market Place Merchants
From: The Management Office
Date: October 1, 2018
Subject: OC Register - Best of Orange County 2018 Picks

The OC Register has just released their Annual People's Choice Awards & Critics' Picks for Orange County's Best of the Best.

We are pleased to announce that The Market Place has **12 featured tenants** in the Readers' Picks for The Best of Orange County. These candidates were selected as top contenders in categories that ranged from ideal places to go for shopping and services, as well as dining and home improvement.

CONGRATULATIONS to our following tenants: **Best Buy, Chase Bank, In-N-Out Burger, Lazy Dog Restaurant & Bar, Lowe's Home Improvement, Snooze an A.M. Eatery, Sprouts Farmers Market, TAPS Fish House & Brewery, The Home Depot, Total Wine & More, Wescom Credit Union, and 24 Hour Fitness.**

For more information or to read the articles covered, visit **OCRegister.com/best**



IRVINE COMPANY

Since 1864

Sephora is Now Open at The Market Place

On June 23, Sephora opened its doors at their new location in The Market Place, located across from LOFT and White House Black Market.



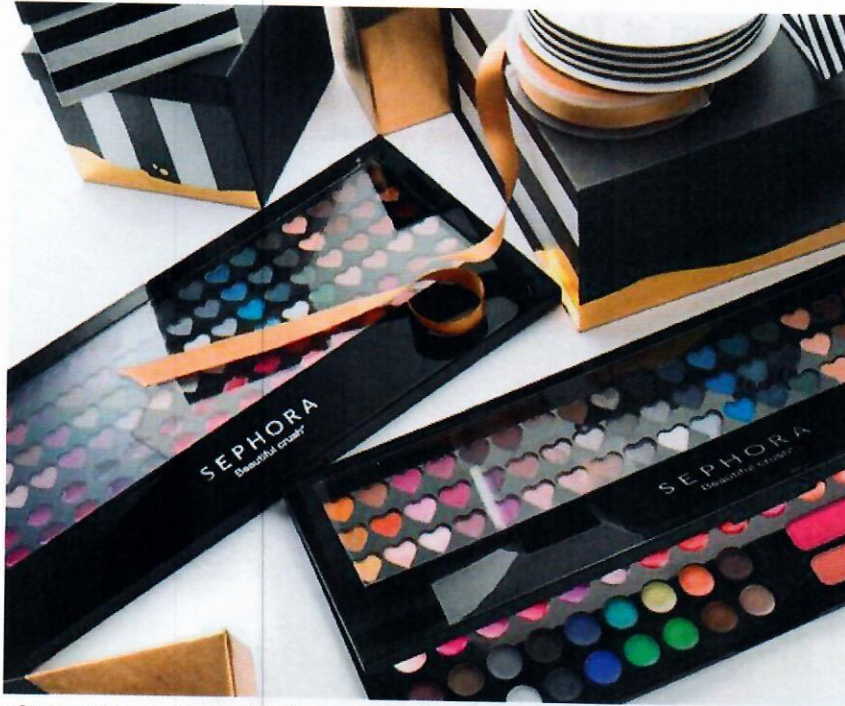
As a revolutionary driver in the beauty industry, Sephora has a powerful beauty presence in countries around the world thanks to its unparalleled assortment of prestige products, unbiased service from experts, interactive shopping environment, and innovation.

The beauty-retail concept, founded in France by Dominique Mandonnaud in 1970, is defined by its unique, open-sell environment with an ever-increasing assortment of products from carefully curated brands, featuring indie darlings, emerging favorites, trusted classics, and Sephora's own SEPHORA COLLECTION.



IRVINE COMPANY

Since 1864



Sephora Collection features their popular Cream Lip Satin Liquid Lipstick, Eyeshadow Perfection Mist Airbrush Foundation and more

Sephora believes every stroke, swipe and dab reveals possibility, and they share their client's love for the confidence that their products, services, and expertise bring to life. In every store, clients unlock their beauty potential through intuitive technology and guidance from the most knowledgeable and professional team of product consultants in the beauty industry.

At the grand opening event of the new 5,400 square foot store, guests enjoyed music by DJ Brandi Garcia, a photo booth, and a free gift with a \$35 purchase. Within the first week of being open at The Market Place, Sephora already exceeded their sales goals and are seeing a high demand for services.

Be sure to stop by the new Sephora at The Market Place to discover the latest in skincare, makeup, hair care and beauty essentials.

Sephora at The Market Place

2999 El Camino Real
Tustin, CA 92782
(714) 669-7746



IRVINE COMPANY

Since 1864

KoJa Kitchen at The Market Place - Now Open



KoJa (aka Korean-Japanese) is a special gourmet sandwich infused with a unique combination of Korean & Japanese flavors. To step it up a notch, KoJa Kitchen substitutes the traditional wheat buns with freshly made crispy garlic rice buns.

We take what is best of both cuisines and reinvent them in a way that is fun and delicious to eat for our KoJa Kitchen fans.

2943 El Camino Real,
Tustin, CA 92782
Phone 657-859-6475
www.kojakitchen.com

Dumpling alert! The first American outpost of JA Jiaozi will open in May in Irvine



JA Jiaozi, a Chinese chain specializing in dumplings, opens its first American outpost in early May at the Marketplace. (Courtesy of JA Jiaozi)

By [ANNE VALDESPINO](#) | avaldespino@scng.com | Orange County Register

PUBLISHED: April 17, 2018 at 12:02 pm | UPDATED: April 30, 2018 at 2:36 pm

More [dumplings](#) are coming to Orange County when JA Jiaozi, a Chinese chain, opens its first American outpost in early May at The Market Place in Irvine. The restaurant, a 2,954 square foot space, will bring seasonal offerings with no artificial coloring, preservatives or MSG.

Menu items will include steamed, boiled and fried dumplings in flavors such as cod fish and chives (\$11.50) and the JA Signature with pork dried shrimp and shrimp roe (\$11.50). Stir fried veggie dishes range from \$9.50-\$11.50, noodle dishes are \$12.50. House specialties include Braised Brisket with Quail Eggs (\$16.50). Appetizers range from Osmantus Cherry Radish, (\$7.50) with date and mint, to Cactus Salad (\$9.50), with shrimp, arugula avocado and orange peel in a Japanese dressing.

Address: 13776 Jamboree Road, Irvine.

Stop by BLKdot Coffee now open at The Market Place for a signature Vietnamese coffee.

THE MARKET PLACE



NOW OPEN

BLKdot Coffee, a neighborhood coffee shop best known for its signature Vietnamese craft coffee, is now open at The Market Place.

The extensive menu features specialty coffee and tea creations, such as Sea Salt Coffee and Thai Tea Lattes as well as sandwiches, pastries, and more.

BLKDOT COFFEE

13786B Jamboree Road, Irvine, CA 92782

(714) 832-1111

Location: near Edwards Market Place Stadium 10
The Market Place

COFFEE & A TREAT



HAVE A PASTRY

Enjoy a sweet or savory pastry with your coffee including cronuts, scones, bagels, quiches and more.





Luv 2 Play Opening in Irvine

Indoor Playground and Family Fun Center Set to Summer 2018

Luv 2 Play is excited to announce the Grand Opening of our fifth location in California. Luv 2 Play Irvine is set to open in Summer 2018 at The Market Place in Irvine.

As a family entertainment center specializing in children ages 1-12 years old, Luv to play provides a safe and secure indoor climate controlled environment to allow children to be active, and meet and play with other children. Children from around the world "Luv 2 Play." With an indoor playground for ages 4 to 12, a toddler area for ages 1 to 4 and a baby area for ages 0 to 2, as well as a redemption area for arcade games and prizes, Luv 2 Play is fun for the whole family.

Parents are always free at Luv 2 Play, and with affordable pricing for unlimited daily play for the kids and birthday packages, Luv to Play is the perfect destination to create lifelong family memories. Parents are welcome to play, or hang back as their kids explore. This location also offers a café and coffee bar where parents and kids can refuel after a day of play.

Please follow us online for information pertaining to the official date of our Grand Opening soon.

About The Market Place

One of Southern California's most popular shopping centers, The Market Place is a 165-acre outdoor lifestyle shopping center offering the best-in-class in a variety of retail categories, including apparel and accessories, electronics, home furnishings and décor, sporting goods and more. Conveniently located off the Santa Ana (5) Freeway, the center straddles the cities of Irvine and Tustin. The Market Place features over 135 stores and notable restaurants, including Nordstrom Rack, Best Buy, Target, Orange County's largest REI, the county's largest See's Candies, Snooze, an A.M. eatery, Hopdoddy Burger Bar, Texas de Brazil, Starbucks Drive Thru, TAPS Fish Market & Brewery, Urban Plates and a stadium-seating Edwards Theater.

For more information, please visit ShopTheMarketPlace.com.

For further information and details about Luv 2 Play, please feel free to view our website and Facebook page below.

Website: <https://luv2play.com/irvine/>

Facebook: <https://www.facebook.com/luv2playirvine/>